



Northern Cape: The road to the sun

NORTHERN CAPE GH2 COMMUNITY ENGAGEMENTS:

Boegoebaai GH2 and Port Development - The National Game Changer

Richtersveld Communal Property
Association and Local Government

Date: 2025



Richtersveld National Park



Solar panels on a Karoo farm



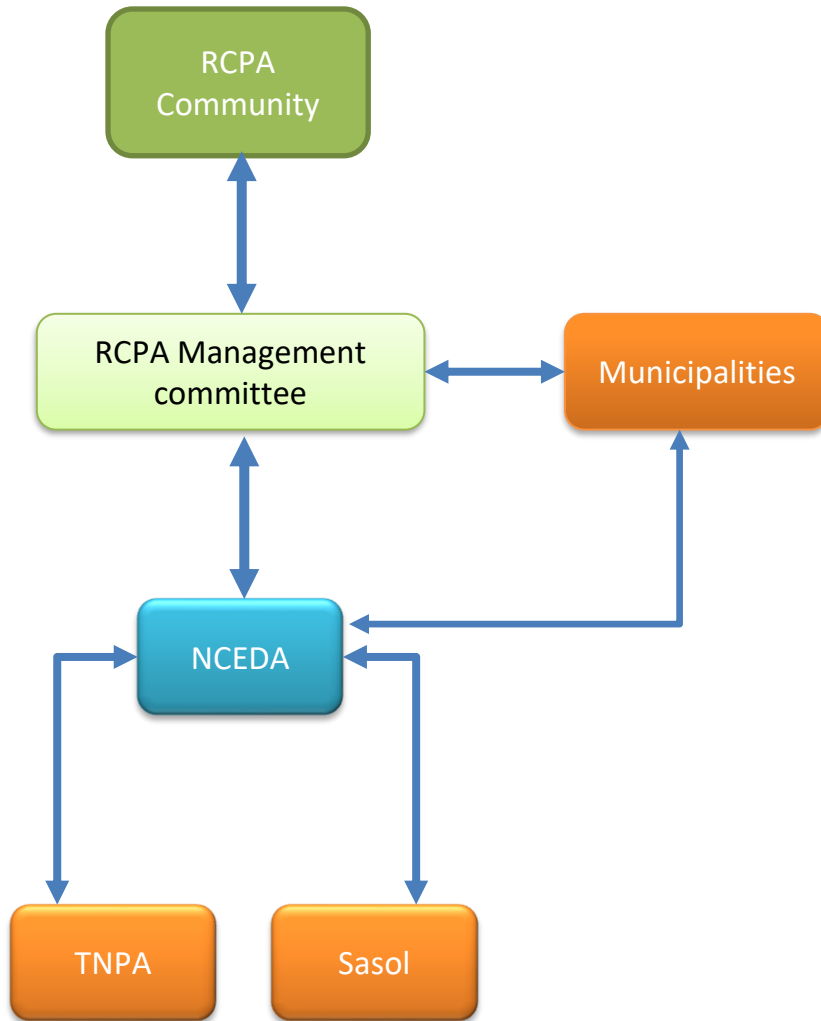
Province of the
Northern Cape
REPUBLIC OF SOUTH AFRICA

nceda
Northern Cape Economic Development
Trade and Investment Promotion Agency

ROADMAP OF COMMUNITY ENGAGEMENTS



Reporting structure



Reporting committees



- **Early and Continuous Engagement** – Engaging with the community from the outset and maintaining open communication fosters transparency, builds trust, and aligns interests.
- **Inclusive Collaboration** – Bringing together all stakeholders—local and national governments, community members, project developers, and ecosystem partners—ensures collective ownership and a shared vision for execution.
- **Clear Communication of Benefits** – Demonstrating the project's positive impact, such as job creation, infrastructure improvements, and enhanced public services, helps secure community buy-in.
- **Responsive to Community Concerns** – Actively listening and incorporating community feedback ensures their voices are valued and reflected in decision-making.
- **Accountability and Transparency** – Providing regular updates on project progress, timelines, and challenges reinforces trust and keeps stakeholders informed.



THANK YOU



officeofthceo@nceda.co.za



+27 53 1100 289



www.ncgh2.co.za